

Regional Growth Forecast & Subregional/ Local Input

Simon Choi and Elizabeth Delgado
Southern California Association of Governments
818 West 7th Street, 12th Floor
Los Angeles, CA 90017
choi@scag.ca.gov
213-236-1849

Presented at the 2006 COG/MPO Mini Conference,
San Diego, California
August 11-12, 2006

SCAG Subregional Boundaries



- **14 in Total**
- **SCAG provides funding and assistance to subregions to facilitate planning activities**
- **Part of SCAG's commitment to inclusive, participatory planning**



Southern California Association of Governments (SCAG)
2006 COG/MPO Mini Conference
August 11, 2006

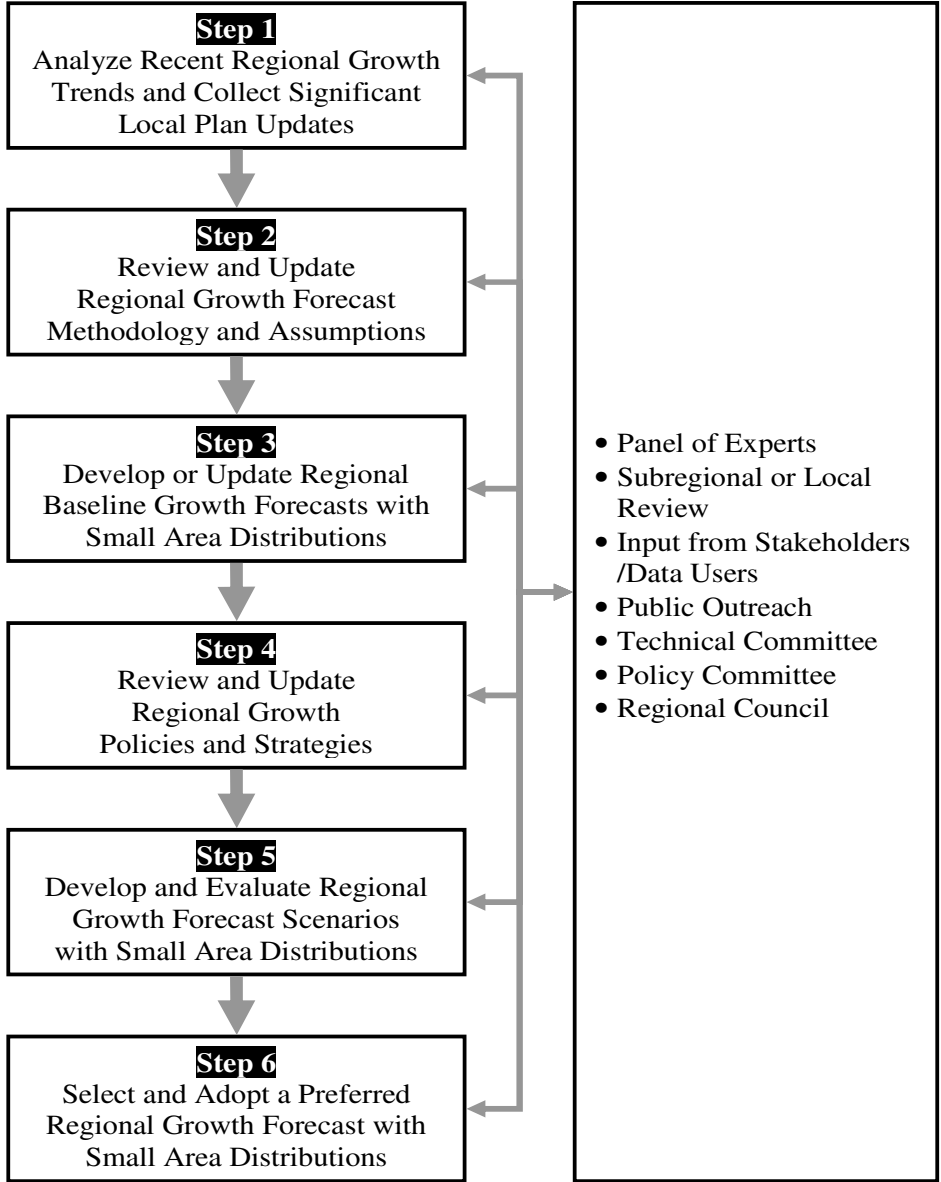
Main Questions

- How to effectively communicate with local jurisdictions re. small area estimates and projections?
 - Effective communication system?
 - Technical issues?



Southern California Association of Governments (SCAG)
2006 COG/MPO Mini Conference
August 11, 2006

Regional Growth Forecast Process



Purpose of Subregional/ Local Review

- Enhance accuracy of estimates based on limited reliability or availability of data.
- Understand projections, methodologies, and assumptions proposed by local jurisdictions.
- Increase local acceptability.



Southern California Association of Governments (SCAG)
2006 COG/MPO Mini Conference
August 11, 2006

Subregional/Local Review Procedure

- Provide local jurisdictions with estimates & projections of major variables along with methodology, assumptions, and sources of data.
- Estimates & projections contain major variables at different levels of geography during the projection period.
- Response rate: very high



Southern California Association of Governments (SCAG)
2006 COG/MPO Mini Conference
August 11, 2006

Challenges

1. Quality of City/Small Area Estimates and Projections by Local Jurisdictions:

- City/Small Area Estimates: U.S. Census, DOF, private vendors.
- City/Small Area Projections:
 - 1) Trend extrapolation
 - 2) Relationship
 - 3) Convert land use plan to projections. No regional context. Employment projection.



Southern California Association of Governments (SCAG)
2006 COG/MPO Mini Conference
August 11, 2006

Challenges

2. Regional Assumptions vs. Locally Specific Growth Environment

- Core assumptions drive forecasts.
- Fertility, Mortality, Migration, Labor Force Participation, Unemployment Rate, Headship Rates.



Southern California Association of Governments (SCAG)
2006 COG/MPO Mini Conference
August 11, 2006

Challenges

3. Relational Consistency

- Population vs. Employment (P/E ratio)
- Population vs. Households (P/H ratio)
- Employment vs. Households (E/H ratio)



Southern California Association of Governments (SCAG)
2006 COG/MPO Mini Conference
August 11, 2006

Challenges

4. Spatial Consistency

- The large area population is the sum of small area population.
- Region, County, City, Census Tract, TAZ



Southern California Association of Governments (SCAG)
2006 COG/MPO Mini Conference
August 11, 2006

Challenges

5. Temporal Consistency

- Monotonous trend
- Regional model (temporal) vs. small area model (non-temporal/allocation oriented)



Southern California Association of Governments (SCAG)
2006 COG/MPO Mini Conference
August 11, 2006

Challenges

6. Accuracy & Uncertainty

- Forecasts errors are larger for 1) small size areas 2) fast growth areas 3) longer projection period 4) different beginning year of the projection horizon.



Southern California Association of Governments (SCAG)
2006 COG/MPO Mini Conference
August 11, 2006

Conclusion

- Establish reasonable communication mechanism
- Resolve technical issues in an effective communication framework



Southern California Association of Governments (SCAG)
2006 COG/MPO Mini Conference
August 11, 2006